



Annual Report **2026**



TAYLOR
— ELECTRIC —
COOPERATIVE



Annual Report 2026

“We are inspired by the dedication and generosity we have received by Taylor Electric Co-op since 1967. Thank you Taylor Electric Cooperative for all you do to enhance our lives and homes!”

- Rodney & Barbara C.

Table of CONTENTS

INTRODUCTION

04 Message from your CEO

ORGANIZATION

06 Board of Directors

09 Message from your Chairman

10 The Team

CORE VALUES

12 Overview

ACCESS FIBER

14 Update

COMMUNITY

16 Operation Round-Up

18 Scholarships

20 Youth Tour

22 Billboard Contest

FINANCIAL

25 Usage

26 Your Dollar

27 Financial Highlights

28 Balance Sheet

29 Revenues & Expenses





Message from your CEO

004

DEAR VALUED MEMBERS,

Welcome to the 87th Annual Meeting of the Membership.

It is a privilege to stand before you once again and reflect on the progress we've

made together over the past year. Because of your continued trust and support, Taylor Electric Cooperative remains strong, focused, and committed to serving our members across all 11 counties in our service territory.

As we look back on 2025, our efforts centered on strengthening the foundation of our system while preparing for long-term growth. Line patrol and tree trimming remained a major priority, ensuring that our infrastructure is protected and positioned to reliably deliver both electricity and fiber internet. Preventative maintenance and system upgrades were critical components of this work, allowing us to better serve our members today while preparing for tomorrow's demands.

The rapid growth in Abilene and

surrounding areas has created both opportunity and responsibility. As demand for our services continues to expand, we have experienced phenomenal growth. With that growth has come the need to prepare for large loads through infrastructure expansion and system improvements. I am proud to share that while these investments are necessary, the financial impact has been minimal. The costs are supported by the large loads, and these members contribute proportionally to serve their operations.

By strategically aligning infrastructure investment with large load growth, the Cooperative has been able to enhance the overall system while maintaining rate stability for the broader membership. This approach reflects our ongoing commitment to the cooperative principles.

Despite continued inflationary pressures affecting materials, equipment, and operations, we have maintained stable pricing. Over the past year, rate adjustments remained under 1%, reflecting our disciplined financial stewardship and careful planning. This is a testament to the efficiency, dedication, and innovation of our employees who work tirelessly to serve you.

Ryan Bartlett
President / CEO



005

We are now two years into a comprehensive 10-year system improvement plan designed to position Taylor Electric for long-term success. This plan focuses on reliability, capacity, modernization, and resilience. Every dollar invested is directed back into the system. Our mission is to deliver value to the members we serve.

As we move through 2026, our theme is clear, Investing in Rural Areas: The Last Mile Is Not Forgotten. Growth is important, but growth must be shared. While urban expansion continues, we remain steadfast in our commitment to rural communities. Every member matters, whether you are in a rapidly developing corridor or at the farthest edge of our lines. Reliable power and high-speed internet connectivity are essential services, and we will continue ensuring that rural areas receive the attention, upgrades, and investment they deserve.

Development across our 11-county territory benefits us all. When communities grow, businesses expand, and infrastructure strengthens, the positive impact extends throughout the Cooperative. Increased load and economic development allow us to reinvest back into the system, improve reliability, and enhance services for every member. This cycle of responsible growth and reinvestment is central to who we are.

Our cooperative principles continue to guide every decision we make. Democratic member control, concern for community, and a

commitment to service above self are not simply words, they are embedded in our culture. We remain focused on transparency, integrity, and long-term sustainability. Growth will never replace our values; rather, it strengthens our ability to live them out more fully.

None of this progress would be possible without our dedicated employees and the leadership of our Board of Directors. Our team continues to meet increasing demands without increasing staffing levels, demonstrating remarkable dedication and efficiency. They work long hours, often behind the scenes, ensuring that power is restored quickly, fiber remains connected, and our system operates efficiently. I extend my sincere appreciation to each of them for their continued commitment to our members.

Taylor Electric Cooperative has always been about people, neighbors serving neighbors. As we continue this 10-year journey of system improvements and strategic growth, our focus remains clear: long-term vision, responsible investment, and delivering value back to the membership.

Thank you for your trust, your engagement, and your support. Together, we will continue building a stronger cooperative, ensuring that no member and no mile is ever forgotten.

Warm Regards,

RYAN BARTLETT
President/CEO
Taylor Electric Cooperative



Growth will never replace our values; rather, it strengthens our ability to live them out more fully.”

2025/2026

Board of Directors

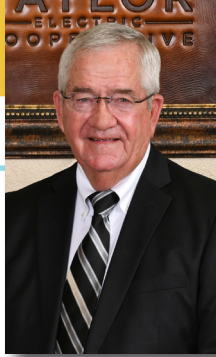


The Board of Directors returned **\$1.7 million in capital credits** to members in April of this year.

ZONE 1

Cecil Davis

Board Chairman



Craig Bessent



ZONE 2

David McFall

Secretary/Treasurer



Garland Carter



ZONE 3

Kathryn Rainey

Board Vice Chairman



Gay Simmons



AT-LARGE

Richard Petree

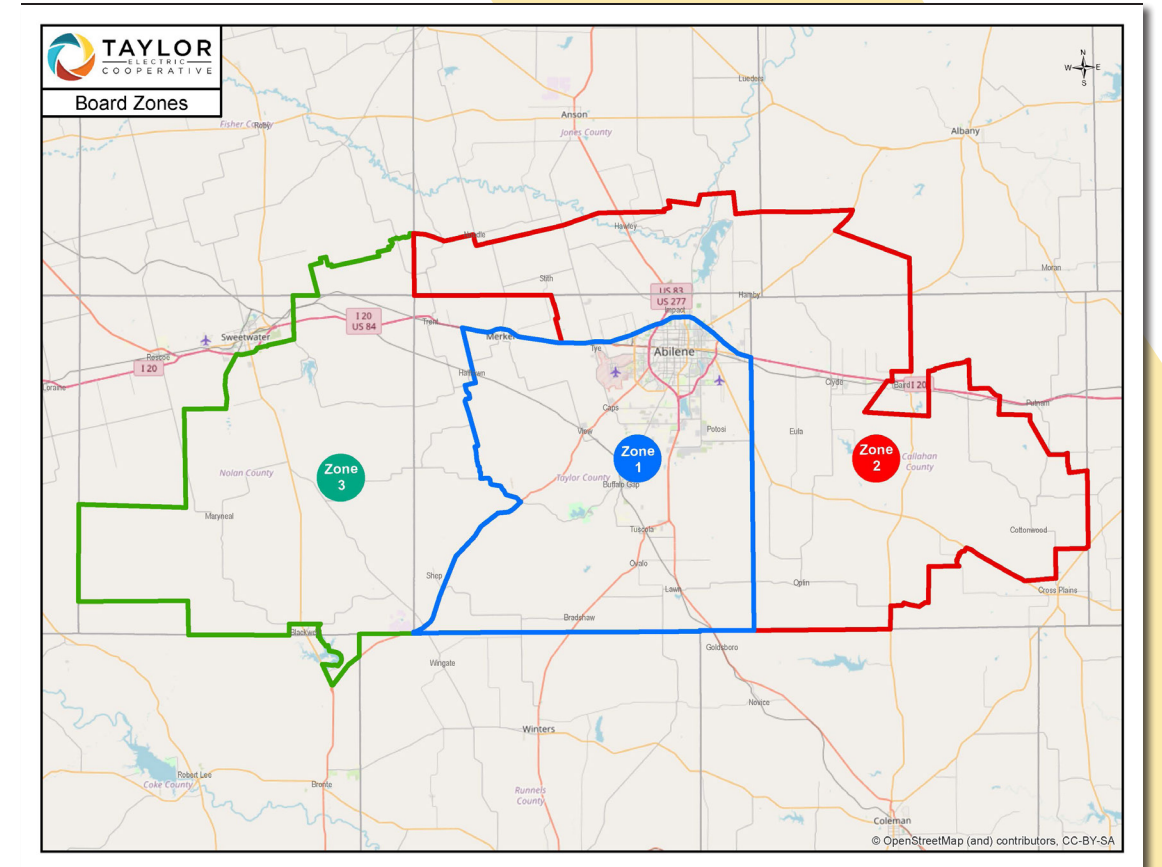


THE OPERATIONS at Taylor Electric are overseen by an elected Board of Directors. The seven directors meet monthly and work hand in hand with the CEO to provide efficient service and reliability to the membership.

Directors are required to attend trainings and obtain certifications for information and updates on local, state, and federal industry topics. Training also ensures all directors are competent to understand and work within the national energy market.

The members of the board are long-standing Taylor Electric members who have been elected by their fellow members.

The Taylor Electric service area is divided into three service zones for equal representation. Each zone is represented by two directors in addition to one at-large director. Directors serve 3-year terms.





Message from your Board Chairman



We remain proud to power your homes, businesses, and communities, and we look forward to another year of working together to strengthen the cooperative we all share.”

Cecil Davis
Board Chairman



DEAR TAYLOR ELECTRIC COOPERATIVE MEMBERS,

As we reflect on the accomplishments of 2025, I am filled with gratitude for what we have achieved together. This year has been one of continued progress, thoughtful investment, and a steadfast commitment to serving our members and strengthening the communities we call home.

In 2025, we continued to expand our electric service to meet the needs of our growing region, connecting new members and enhancing the reliability of our existing infrastructure. We invested in system upgrades and

technology improvements to ensure safe, dependable power delivery, even during times of peak demand and severe weather.

Our ACCESS fiber internet network also experienced meaningful growth this year. More members gained access to high-speed, reliable broadband service, helping families, businesses, and students stay connected in an increasingly digital world. Expanding broadband in rural areas remains a priority, and we are proud of the progress made in bridging the connectivity gap across our service territory.

Community support continues to be at

the heart of our cooperative mission. Through Operation Round-Up and the generosity of our members, funds were distributed to 26 local volunteer fire departments. The program has now generated over \$1 million to support emergency services. These contributions help ensure that essential resources remain strong and accessible throughout our rural communities.

In addition, 2025 brought a renewed focus on operational efficiency and employee development. We provided ongoing training for our crews and staff to ensure they are equipped with the latest knowledge and tools to serve you

safely and effectively. Their dedication and professionalism are essential to maintaining the high standard of service you expect from your cooperative.

We also prioritized transparency and member engagement throughout the year. Whether through annual meetings, community events, or regular communication updates, we remained committed to keeping you informed and involved. As a member-owned cooperative, your voice plays a critical role in guiding our direction and ensuring we remain aligned with your needs.

We also remained committed to investing

in the next generation. Programs such as Youth Tour and the Taylor Electric Scholarship Fund provided opportunities for young leaders to learn about the cooperative difference and explore future career and educational paths. Supporting youth development helps preserve the strength and sustainability of our cooperative for years to come.

As we look ahead to 2026, we are energized by the opportunities before us. We will continue focusing on reliability, responsible growth, and member-focused innovation. By maintaining strong financial stewardship and prioritizing service excellence, we are confident that the year ahead will build upon the solid

foundation we have established.

On behalf of the Board of Directors, thank you for your continued trust and support. It is an honor to serve you. We remain proud to power your homes, businesses, and communities, and we look forward to another year of working together to strengthen the cooperative we all share.

Sincerely,

CECIL DAVIS
Board Chairman
Taylor Electric Cooperative





The Team

010

011



 SCOTT ADAIR Senior Meter Technician 20 Years	 PHILIP ADAMS Automotive Mechanic I 9 Years	 ROD ANDERSON System Control Operations Manager New	 JOSEPH ANDRESS Fiber Crew Foreman 5 Years	 BOBBY BAKER Fiber Operations Manager 11 Years	 KOLBY BARNHILL Journeyman Lineman 9 Years	 RYAN BARTLETT President/CEO 11 Years	 MICHAEL BONNELL Senior GIS Analyst 5 Years	 TRENT BRAZELTON Member Service Representative - Fiber 11 Years	 NANCY BRISCO Chief Financial Officer 11 Years	 TANNER BRYAN Staking Technician III 8 Years	 RHONDA CAMPBELL Sr. Member Service Representative 23 Years
 OJ CANO Journeyman Lineman 7 Years	 JASON CANTU Working Foreman 13 Years	 BECKY CARROLL Sr. Financial & Payroll Analyst 4 Years	 COLBY CATON Substation & Metering Manager 11 Years	 LEVI CLAYTON Line Locate Technician 7 Years	 DONNA COOKE Accounts Payable 27 Years	 HANNAH CROWE Operations Controller 12 Years	 CHRISTIAN DEAL Facility Maintenance Personnel 2 Years	 JASON DEVANEY Working Foreman 20 Years	 KLINT DOAN Energy Services Representative - Lead 24 Years	 KYLE ELLINGTON Apprentice Lineman (Level 4) 4 Years	 MACY FIELD PR & Communications Manager 2 Years
 JAYDEN FOSS Apprentice Lineman (Level 4) 4 Years	 JOSHUA FOSS Working Foreman 26 Years	 SARAH FREEMAN Controller 17 Years	 JARRETT FULFER Apprentice Lineman (Level 1) New	 JASON GAURA Working Foreman 11 Years	 KYLE GAURA Member Service Representative (Level 1) New	 ROBERT GIDDINGS Master Electrician 20 Years	 DREW GILBREATH Apprentice Lineman (Level 2) 3 Years	 STEVEN GOODWILL, JR. Sr. System Control Operator 18 Years	 JEANNIE GRAHAM Executive Assistant 12 Years	 ALLISON GRIFFIN Administrative Services Manager 13 Years	 JAMES GRIMES Transportation Manager 20 Years
 YONI GRIMES AMI System Analyst 29 Years	 WYATT HAMILTON Apprentice Lineman (Level 4) 4 Years	 RUSTY HARPER Fiber Technician (Lvl 3) 5 Years	 JUSTIN HARRIS Sr. Fiber Technician 13 Years	 LISA HARRIS Accounting Clerk 31 Years	 KYLE HASPEL Construction & Energy Services Manager 10 Years	 WADE HATCH Director of Engineering 8 Years	 LYNN HAYS Energy Services Representative 20 Years	 MISTI HAYS Accounting Manager 22 Years	 ERIC HENDERSON Sr. System Control Operator 13 Years	 CANON HERRERA System Control Operator (Level 1) New	 KARLY HOHERTZ Member Service Representative (Level 1) New
 RYAN HOLMES Energy Services Representative 15 Years	 LINDA HUNT Sr. Financial Planning & Analysis Manager 42 Years	 PAKE JORDAN Apprentice Lineman (Level 2) 2 Years	 BLAKE KONECNY Journeyman Lineman 6 Years	 JD LINDSEY Working Foreman 20 Years	 CONNOR LOVELADY Groundman New	 BOBBY MARTIN Fiber Outside Plant Supervisor 11 Years	 DIEGO MATA Apprentice Lineman (Level 2) 1 Year	 LAUREN MCKEENAN Member Service Representative (Level 3) 6 Years	 OC MCKEENAN Fiber Inspection Serviceman 29 Years	 JASON MOORE Facilities Supervisor 2 Years	 CARY MUNDEN Staking Manager 29 Years

 BRANDON NELSON Staking Technician III 4 Years	 BILLY NEW Service Operations Manager 30 Years	 JACK ODOM Working Foreman 5 Years	 CARSON PARKER Fiber Technician Lvl 2 1 Year	 BRANDY PORTER Member Services Manager 13 Years	 ANGEL RAGANS Member Services Representative (Level 2) 4 Years	 NICK ROBILLARD Director of IT 8 Years	 DAVID ROBERTS Senior Systems Engineer 12 Years				
 RODNEY RUSSELL Advanced Utility Engineering Technician 20 Years	 PETE RUTLEDGE Line Inspection Serviceman 31 Years	 BRITTON SEYMORE Journeyman Lineman 7 Years	 BRODY SHADLE Journeyman Lineman 6 Years	 CHAD SIPE Construction & Maintenance Operations Manager 29 Years	 KYLE SLOAN Working Foreman 20 Years	 COLT STAGGS Engineering Coordinator 7 Years	 CJ THOMAS Safety Manager 17 Years	 DAVID THOMAS Director of Electric Operations 31 Years	 DONNIE TUTT Facility Maintenance Personnel 20 Years	 BRETT UNDERWOOD Engineering Technician I 9 Years	 CODY VANDERPOOL Meter Technician II 4 Years
 RAY VILLANUEVA Engineering Technician I New	 ELIZABETH VILLARREAL System Control Operator (Level 1) 2 Years	 MANUEL VILLARREAL Staking Technician II 11 Years	 BLAYNE WALKER Staking Technician I New	 SAM WALKER Groundman New	 JEFFERSON WESSON Accountant 13 Years	 COLE WILKERSON Apprentice Lineman (Level 1) New	 JOE WILSON Director of Fiber Operations 28 Years	 REID WILSON Apprentice Lineman (Level 3) 3 Years	 KERRY WINDLAND System Control Operator (Level 1) New	 JOEY ZINK Apprentice Lineman (Level 2) 3 Years	

EMPLOYEE SERVICE AWARDS

30 YEARS 20 YEARS 15 YEARS 10 YEARS 05 YEARS

Billy New

Scott Adair
Jason Devaney
Robert Giddings
James Grimes
Lynn Hays
JD Lindsey
Rodney Russell
Kyle Sloan
Donnie Tutt

Ryan Holmes

Kyle Haspel

Joseph Andress
Michael Bonnell
Rusty Harper
Jack Odom



Core Values



“
We love Taylor Electric Cooperative, Inc. The service and reliability is amazing. We appreciate the hard work and dedicated linemen!
 ”
 - Wendi W.



Fiber Internet Access Across the Big Country

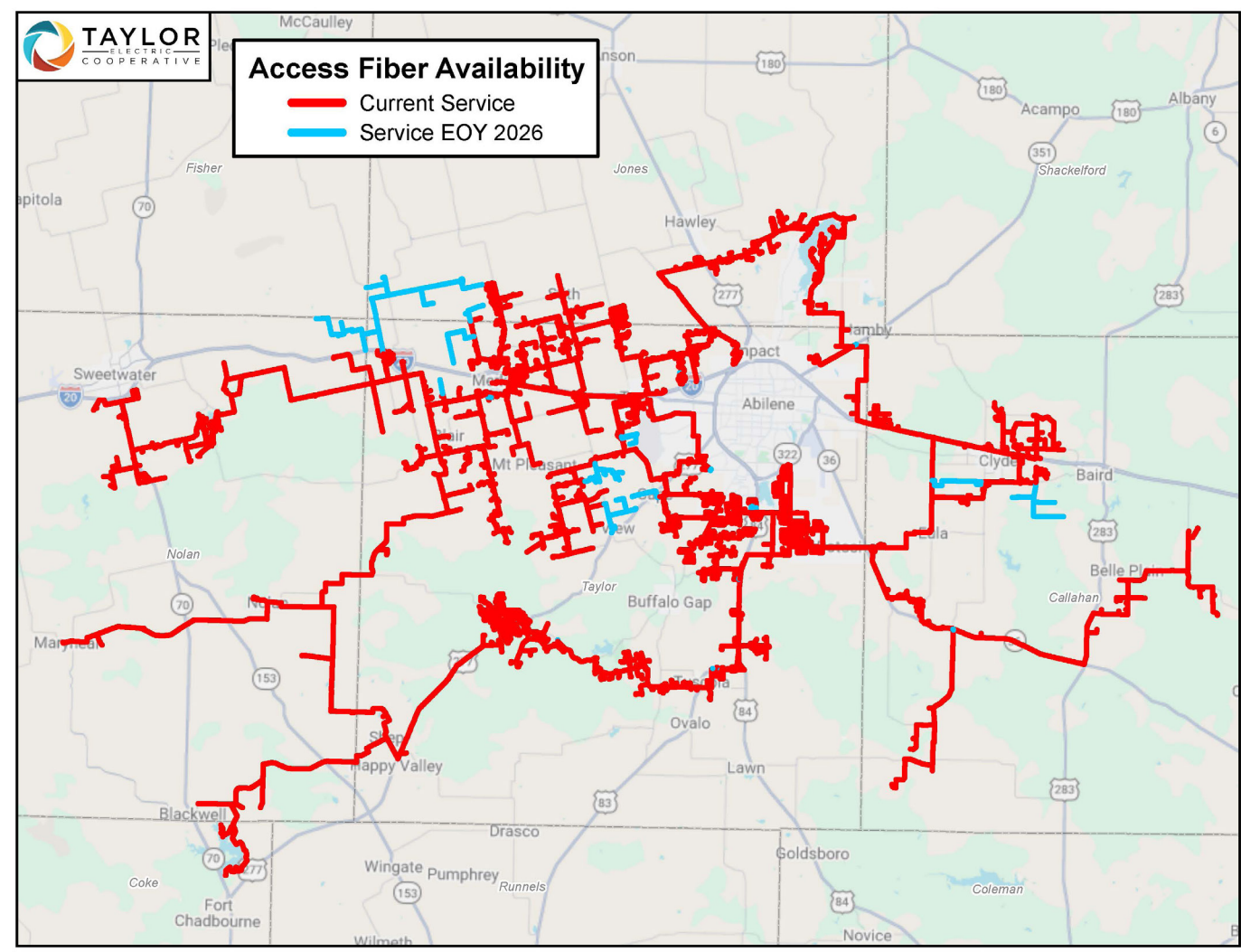
Members that
have **ACCESS** to
Taylor Electric's
fiber internet service

8,900+

“

It gives us real peace of mind knowing we're taken care of by local folks who truly understand our community—not someone sitting thousands of miles away.”

-Hossein K, member and owner of Iron Horse Travel Center





Operation Round-Up

OPERATION ROUND-UP is a shining example of the cooperative difference. The voluntary program directly affects the communities served by Taylor Electric Cooperative by giving back to local volunteer fire departments, the ones who never hesitate to rush to the membership during emergency situations.

The round-up fund is created by rounding up member's monthly bills to the nearest dollar. The additional change is then collected to create the Operation Round-Up account.

For example: If a monthly billing statement is \$168.60, the member would be billed \$169.00 and the additional \$0.40 would be moved to the round-up fund. The annual average contribution by the individual member is small at approximately \$6.00 per year, but the cooperative effort is large!

Each April, checks from the round-up fund are presented to area volunteer fire departments. Since

the inception of the Operation Round-Up program in 2006, Taylor Electric membership has donated over \$1 million to volunteer fire departments.

A total of 26 area volunteer fire departments will receive Round-Up funds; 11 VFDs will receive \$2,750 and 15 VFDs will receive \$2,750 plus an additional \$750 for being members.



The volunteer fire departments receiving donations are:

- | | | | |
|-----------------------|----------------------------|----------------------------|-----------------------------|
| Baird VFD | Eula VFD | Merkel VFD | Texas Forest Service |
| Blackwell VFD | Hamby VFD | Moro/Bradshaw VFD | Trent VFD |
| Buffalo Gap VFD | Hawley VFD | Mulberry Canyon VFD | Tye VFD |
| Clyde VFD | Jim Ned VFD | Nolan VFD | View VFD |
| Cottonwood VFD | Lake Sweetwater VFD | Oplin VFD | Wingate VFD |
| Cross Plains VFD | Lawn VFD | Potosi VFD | |
| ECCA VFD | Maryneal VFD | Putnam VFD | |

Volunteer Fire Departments listed in red are members of Taylor Electric.





Scholarships

018

TEN TAYLOR ELECTRIC COOPERATIVE MEMBER STUDENTS received \$1,000 scholarships towards future education expenses. The Taylor Electric Cooperative Scholarship Program provides scholarships to local students who live in a home powered by Taylor Electric each year. The Cooperative has awarded over \$100,000 to local students since the start of the program.



Keagan Ables
Hawley High School



Lily Fowler
Merkel High School



Ada Hogan
Jim Ned High School



Cutter Keesee
Wylie High School



Allison McCall
Wylie High School

019



Avery New
Wylie High School



Michael Nunn
Wylie High School



Camryn Stone
Merkel High School



Blaze Valentine
Wylie High School



Maeson Willis
Jim Ned High School





NRECA Youth Tour

FOR HIGH SCHOOL STUDENTS who grow up in rural Texas, visiting a place like Washington, D.C., might sound like a far-away dream. In June, the Government-in-Action Youth Tour, sponsored by the state's electric cooperatives in conjunction with Texas Electric Cooperatives and the National Rural Electric Cooperative Association, sends select students on a trip to the nation's capital. In 2025 Taylor Electric selected and sponsored 5 area students after a rigorous application process.

Each year, the selected students get to see sites they may have only experienced in history books or on television. In addition to visiting monuments, museums, and historical sites that would be a part of any standard tour of the capital, the students also fulfill the ambition of then U.S. Sen. Lyndon Johnson, who inspired the Youth Tour with his desire expressed in 1957 for young people to "actually see what the flag stands for and represents."

Tour participants get to meet their members of Congress, hear inspirational speakers, and interact with other Youth Tour participants from across the country. Youth Tour students also have the chance to participate in the wreath-laying ceremony at Arlington National Cemetery, see the Sunset Parade at the Marine Corps War Memorial, and visit the Supreme Court, the U.S. Senate, and House of Representatives' chambers, and the Library of Congress.



Youth Tour students gather on the steps of the Lincoln Memorial in Washington, D.C. during their Summer 2025 visit. Left to right: Jarrett Ortiz, Ash Koehler, Madelyn Garrett, Eduardo Hernandez & Sarah Meissner

021



Madelyn Garrett
Abilene Christian



Eduardo Hernandez
Merkel High School



Ash Koehler
Hawley High School



Sarah Meissner
Merkel High School



Jarrett Ortiz
Wylie High School

“



Small towns need cooperatives and because of this trip, I've gained a new understanding of what cooperatives are set out to do.” - Ash Koehler

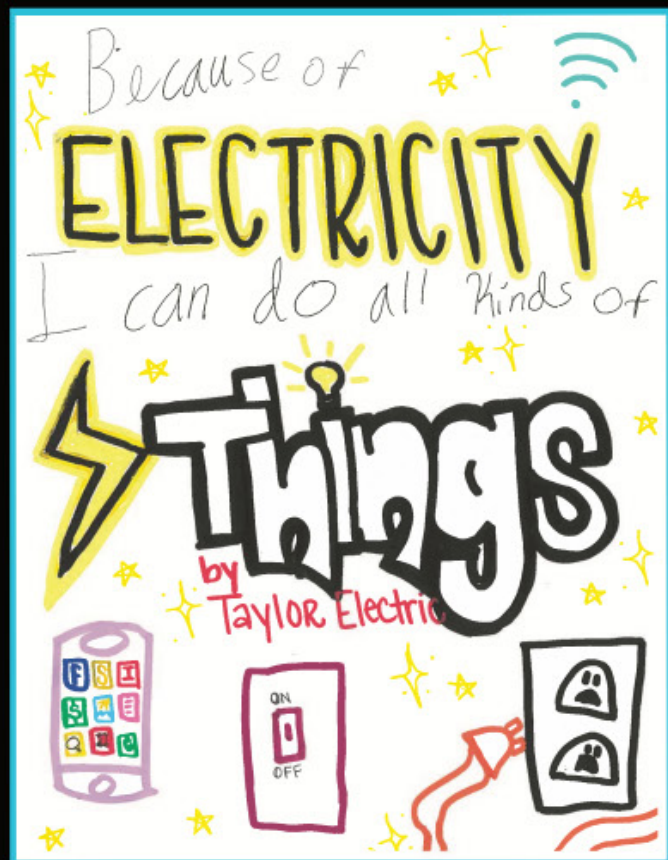


Billboard Contest

022

023

TAYLOR ELECTRIC enlisted the help of 5th graders from member schools (Abilene Christian, Hawley, Merkel, Trent, and Wylie) to design a new billboard. Yailynn B. at Hawley Elementary School portrayed what she can do because of electricity. Her design is featured on a billboard near the Abilene office at the corner of Hwy 83/84 and FM 707.



Thanks Yailynn B.

Hawley Elementary School

Winner of Taylor Electric Cooperative Billboard Contest



Yailynn B. of Hawley Elementary poses with the Taylor Electric billboard featuring her art from this year's 5th Grade Billboard Contest.



2025 Financial Summary



[Taylor Electric] has provided me great service,
since 1985!”

- Sharon E.

Usage:



Residential
239,173 MWh



Small Commercial
75,758 MWh



Large Commercial
233,155 MWh



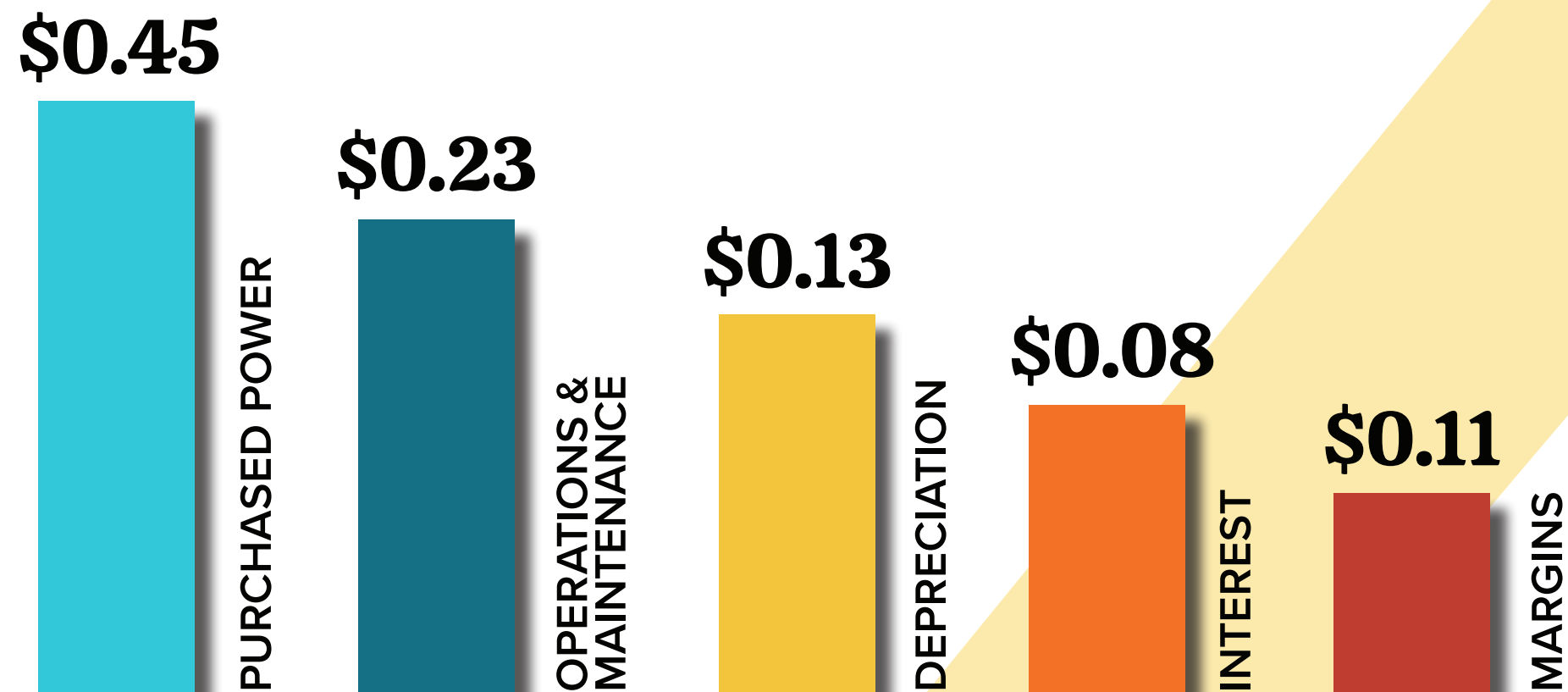
Other Sales
10,072 MWh





How was your dollar used?

2025 Financial Highlights



Assets

UTILITY PLANT, NET 78%
INVESTMENTS & CASH 19%
ACCOUNTS RECEIVABLE 3%
PREPAYMENTS & OTHER FEES <1%

Liabilities & Member Equity

46% LONG-TERM DEBT
40% TOTAL NET WORTH
8% CURRENT & OTHER NON-CURRENT LIABILITIES
6% OTHER DEFERRED CREDITS & FEES



2025 Balance Sheet

(in thousands)

2025 Revenues & Expenses

(in thousands)

ASSETS

Total Utility Plant	\$274,108
Less: Depreciation	79,291
Net Utility Plant	194,817
Non-Utility Property	153
Cash in Bank & Investments	45,970
Accounts Receivable	7,310
Other Current & Accrued Assets	884

TOTAL ASSETS **\$249,134**

LIABILITIES

Long-term Debt	\$113,740
Current & Accrued Liabilities	20,761
Other Deferred Costs	14,579

TOTAL LIABILITIES **\$149,080**

NET WORTH

MEMBERS' EQUITY

Membership Fees	\$150
Patronage Capital & Other Equities	99,904

Total Net Worth 100,054

TOTAL LIABILITIES & NET WORTH **\$249,134**

REVENUES

Residential	\$37,989
Small Commercial	10,930
Large Commercial	14,068
Other Revenue	9,095

TOTAL OPERATING REVENUES **\$72,082**

G&T and Other Capital Credits	\$3,265
Non-Operating Margins	362

TOTAL REVENUES **\$75,709**

EXPENSES

Purchased Power	\$33,928
Operations & Maintenance	17,788
Depreciation	9,610
Interest on Debt	6,075

TOTAL OPERATING EXPENSES **\$67,401**

Net Margins Including G&T and Other Capital Credits	\$8,308
---	---------

TOTAL EXPENSES & CAPITAL CREDITS **\$75,709**



The power of
POWER *with*

TAYLOR  **R**
— E L E C T R I C —
C O O P E R A T I V E





TAYLOR
— ELECTRIC —
COOPERATIVE



Services for Living
Connections for Life