

CEO CORNER



Ryan Bartlett,
President / CEO

Scams Evolve with Technology

Technology is paving the way for innovations in the ways energy is used, produced, stored and shared. More consumers are interested in green energy alternatives, and smart homes and apps make managing energy use and paying your electric bill easier than ever.

While the changing energy market has created more options for consumers, it has also resulted in more utility scams and misleading information.

Utility scams are common because everyone wants to make sure their power stays on, and new products and services provide an opening for scammers to mislead consumers and sell shoddy products and services.

Avoid Phone Scams

A common phone scam typically begins with a phone call from a number that appears to be from a valid utility company. The scammer will claim you have a past due account and threaten to disconnect service or take legal action. The scammer will typically demand that you use a prepaid debit card or money order, often within a very short, urgent time frame to pay a supposed past due amount.

You can combat this scam by being aware of the status of your account. Never give your banking or personal information over the phone to someone you did not call. If you have a question or concern about your electric bill, call us directly at 325-793-8500. Do not use a phone number given by the scammer.

Avoid Solar Scams

Another scam we see from time to time is connected to rooftop solar. Homeowners with rooftop solar power systems may receive a sales call offering an accessory,

upgrade or extended warranty for their solar array. The calls could be from crooks claiming to represent a solar company or promising to replace faulty or broken parts or improve efficiency.

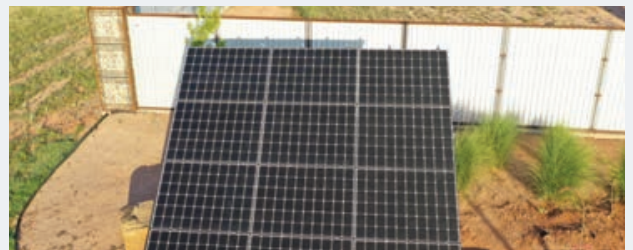
Again, if you aren't expecting the call, don't be fooled. These calls offering misleading information are likely a scam. Call Taylor Electric Cooperative or the company that installed the solar panel array if you think there may be a problem.

It's also common for a salesperson to make claims of "free electricity" if you install a solar power array. But the truth is, in addition to the cost of the solar power installation, you'll still pay fees to your electric provider to be connected to their system. Before you sign up, call us to find out exactly what costs you can expect.

Use Trusted Sources

When considering any electrical upgrade to your home, make sure you're working with a reputable company. Because this is still an emerging industry with evolving technology, there has been a proliferation of pop-up companies in the market whose main priority is to make a quick buck.

Remember that you have a trusted energy adviser in Taylor EC. We're a community-focused organization that works to deliver affordable and reliable energy to our members safely and efficiently.



CEO CORNER



AKCHAMCZUK | ISTOCK.COM

Don't Try To Hide Transformer Boxes

BEAUTIFYING OUR HOMES is important to many of us. If your home is served by an underground electric cable, you may be tempted to hide the accompanying transformer cabinet from sight by planting shrubs or flowers around it. Please refrain from doing so.

Obstacles around a transformer could pose safety risks and inhibit power restoration should an electric cooperative employee need to access it for maintenance and repairs.

Padmount transformers serve the purpose of stepping down electricity from the 8,000 volts carried by transmission lines to the 120 or 240 volts that your home needs. Contact with electricity from the transformer could cause shock or electrocution.

Shrubs and other structures must be at least 10 feet away from the door opening and 5 feet away from all sides of transformers.

Never paint a transformer. They are a uniform color so that electric cooperative employees can easily identify them.

Digging close to the unit can be dangerous and life-threatening. Wires from a transformer could extend out in any direction. Always call 811 before digging in your yard.

Emphasize the dangers of these units to your children and other family members, and keep them away.

Transformers might look like a bench or a jungle-gym obstacle, but children should not sit on or play on or around transformers. Prevent kids from inserting objects into openings in the transformer case, as tempting as it might be to deposit sticks or rocks inside.

For the safety of your family and ours, give transformer cabinets a wide berth and keep them free from debris and coverings.

If you notice any signs of disrepair to a transformer, such as a faulty lock, oil leaking or damaged welds, contact Taylor Electric Cooperative immediately. Stay away from the transformer until repairs can be made by professionals. ■

Taylor Electric Cooperative

A Touchstone Energy® Cooperative 

CONTACT US

226 County Road 287, Merkel, TX 79536

P.O. Box 250, Merkel, TX 79536

Phone (325) 793-8500

Web taylorelectric.com

President/CEO

Ryan Bartlett

Board of Directors

Cecil Davis, Board Chairman, Zone 1

Leland Robinson, Board Vice Chairman, Zone 1

David McFall, Secretary-Treasurer, Zone 2

Garland Carter, Zone 2

Richard Petree, At-Large

Kathryn Rainey, Zone 3

Gay Simmons, Zone 3

24/7

Outage Hotline

For information and to report outages, please call us.

LOCAL

(325) 793-8500

HANDY WAYS TO PAY YOUR BILL

ONLINE

taylorelectric.com

TAYLOR ELECTRIC APP

Available on your Apple or Android device.

BY PHONE

(325) 793-8500. Payments credited immediately.

IN PERSON

Hours Monday–Friday, 7:30 a.m.–5:30 p.m.

Merkel 226 CR 287, Merkel 79536

Abilene 7966 Highway 83, Abilene 79602

Payments credited immediately.

DROP BOX

Merkel office located near the entrance of the building.

Abilene office next to first door on the left.

Payments credited next business day.

PAY STATIONS

• Cash Saver, 155 Sayles Blvd., Abilene

• United Supermarket, 2160 Pine St., Abilene

• Check Express, 906 E. Broadway Ave.,

Sweetwater

Payments credited next business day.

NOTICE

Effective June 1, 2023, all credit/debit card transactions will be assessed a 2.45% convenience fee.

VISIT US ONLINE

taylorelectric.com



Check us out at

TexasCoopPower.com/taylor



GIULIANO BENZIN | ISTOCK.COM

Stay Cool With the Right Fan

IF YOU'RE LOOKING for a way to keep from turning your air conditioning on, reach for your ceiling fan instead. Ceiling fans can make a room feel cooler while using 90% less energy than an air conditioner.

If you're looking into adding a ceiling fan or replacing an old one, answer these questions first.

How big is your room? The bigger the room, the longer the blades should be. A rule of thumb: For a room smaller than 100 square feet, such as a bathroom or laundry room, buy a fan with 32- to 36-inch blades. For a medium-sized bedroom or kitchen—up to about 225 square feet—you'll need a fan with blades measuring 42 to 48 inches. Large primary bedrooms and dining rooms up to 485 square feet: 50- to 56-inch blades. Larger rooms such as a living room—up to around 600 square feet: 60 inches or more.

How high is the ceiling? For the most comfortable results, install the fan 7 to 8 feet from the floor. If your room has a high ceiling, buy an extension downrod to lower the fan to the ideal height. Some manufacturers have special close-mount fans for rooms with extra-low ceilings.

Do you want to combine the fan with a light? Fixtures with down lighting create a traditional effect, while those with uplighting will bounce the light off the ceiling to diffuse the light and make it softer. If you do opt for lighting with your fan, be sure to look for the Energy Star label for the light. Energy Star-qualified units are more than 50% more efficient than conventional units and can save you money on your utility bills.

How do you want to operate the fan? You can pull a cord, flip a light switch or tap a remote control.

If you raise your thermostat by only 2 degrees and use your ceiling fan, you can lower air conditioning costs by up to 14% over the course of the cooling season. And remember: Ceiling fans cool only people, not rooms, so when you leave the room, turn the fan off. ■

Creamy Cilantro Heat

½ bunch cilantro

6–7 slices pickled jalapeño peppers

1 clove garlic

Juice of 1 lemon

16 ounces plain Greek yogurt

⅓ white onion, finely diced (optional)

Creole seasoning, to taste

1. Process cilantro, jalapeño, garlic, lemon juice, yogurt and onion, if using, in a blender or food processor until cilantro is finely chopped.

2. Season with Creole seasoning. Increase garlic or jalapeño according to your tastes.

3. Use as a dip, spread or sauce on your favorite chip, bread or meat.

SERVES 10

TCP Find this and more delicious recipes online at [TexasCoopPower.com](https://www.texascoopower.com).

LILECHKA75 | ISTOCK.COM





SKYNESHER | ISTOCK.COM

Work Safely on the Job and at Home

ELECTROCUTION IS THE fourth-leading cause of work-related deaths among construction workers, according to the U.S. Occupational Safety and Health Administration, with an average of one worker electrocuted every day across the country.

Proper training and knowledge of electricity on the work site can help keep construction workers out of harm's way—and the same principles extend beyond the workplace into everyday life. **Here are 10 tips from OSHA to keep safe on the job and at home.**

1. Plugged-in electric tools with exposed metal parts must have a three-prong grounding plug—and be grounded—or be double-insulated.
2. Equipment grounding only works when there is a permanent and continuous electrical connection between the metal shell of a tool and the earth.
3. Proper polarity in electrical wiring is important: hot to hot, neutral to neutral, equipment ground to equipment ground.
4. Circuits must be equipped with fuses or circuit breakers to protect against dangerous overloads. Fuses melt and circuit breakers trip to turn off current like a switch.
5. Most 120-volt circuits are wired to deliver up to 15 or 20 amps of current. Currents of 50–100 milliamperes can kill you.
6. Wet conditions lower skin resistance, allowing more current to flow through your body. Currents above 75 milliamps can cause a life-threatening irregular heart rhythm.
7. A ground-fault circuit interrupter protects from a ground fault, the most common electrical hazard. GFCIs detect differences in current flow and trip when there is current leakage. Test a GFCI every time you use it.
8. Extension cords must be properly rated for their intended use.
9. Overhead power lines can kill. The three major methods of protection are maintaining a safe distance, de-energizing and grounding lines, and having the power company install insulating sleeves.
10. Underground power lines can kill. Call 811 before you dig to locate all underground cables. ■

5 Ways To Be A Good Steward

WANT TO BE PART of the solution rather than the problem when it comes to being a good steward of Earth? **Consider these suggestions:**

1. **Throw less away.** Reuse it in your own household, recycle it through your community waste pickup or dump, or donate it if it still has life left. Another approach is to collect fewer disposable items in the first place.
2. **Use less water.** That saves not just water but also energy if the water you conserve would have been heated. Shorter showers, using cold water for washing clothes, and running the dishwasher only when it's full are a few ideas.
3. **If you still have incandescent lightbulbs** lingering around your home, switch them out for LED bulbs or fixtures. These lightbulbs' technology makes them far more efficient than the old ones, and they last much longer.
4. **Buy energy-efficient electronics and appliances** when it's time to replace your old ones. Look for the Energy Star label to ensure you're getting a product that meets efficiency standards.
5. **Turn off and unplug electric devices** when you're finished using them for the day. ■



FANGXIANJIO | ISTOCK.COM